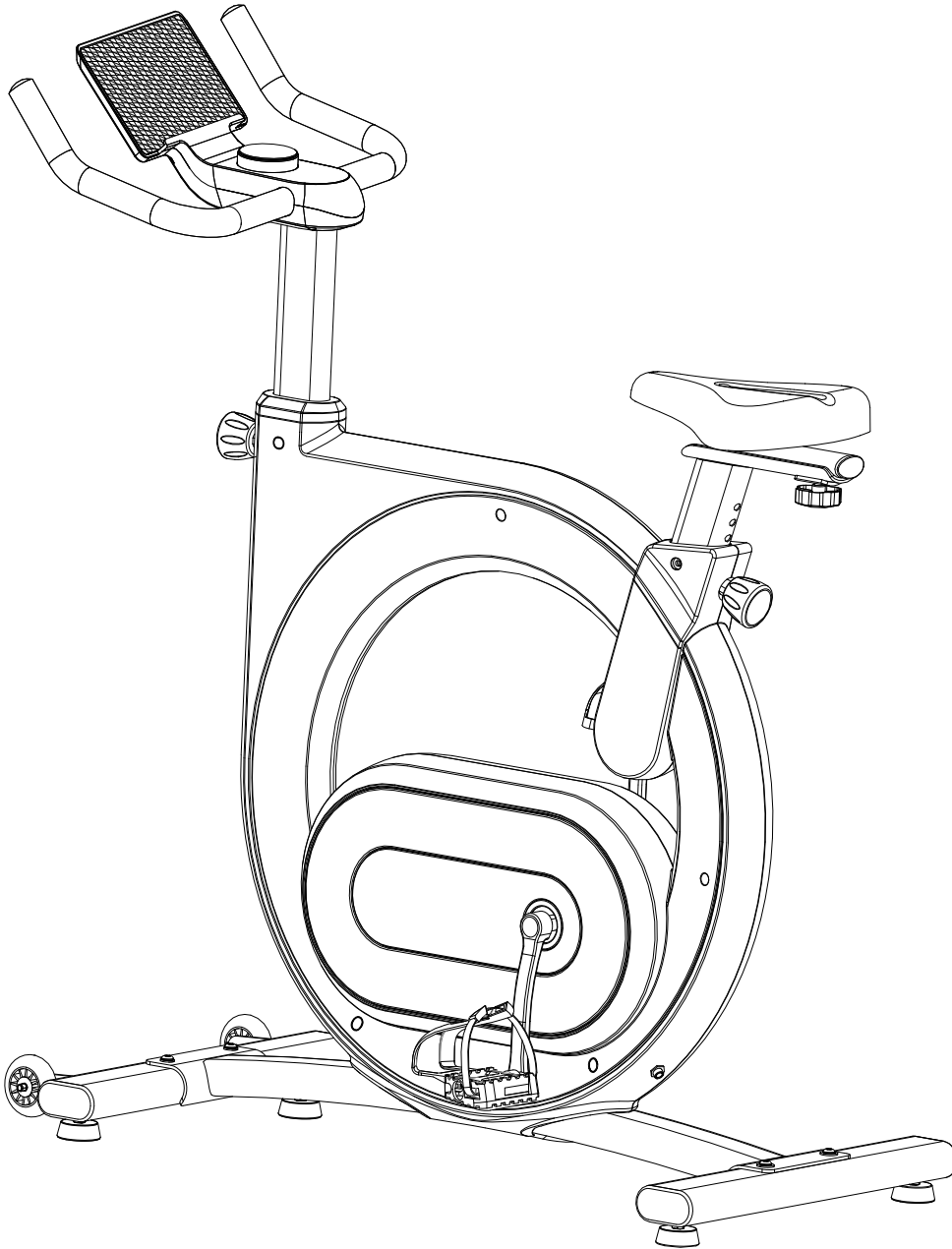


# Magnetic Bike

## BGB219



**IMPORTANT!**

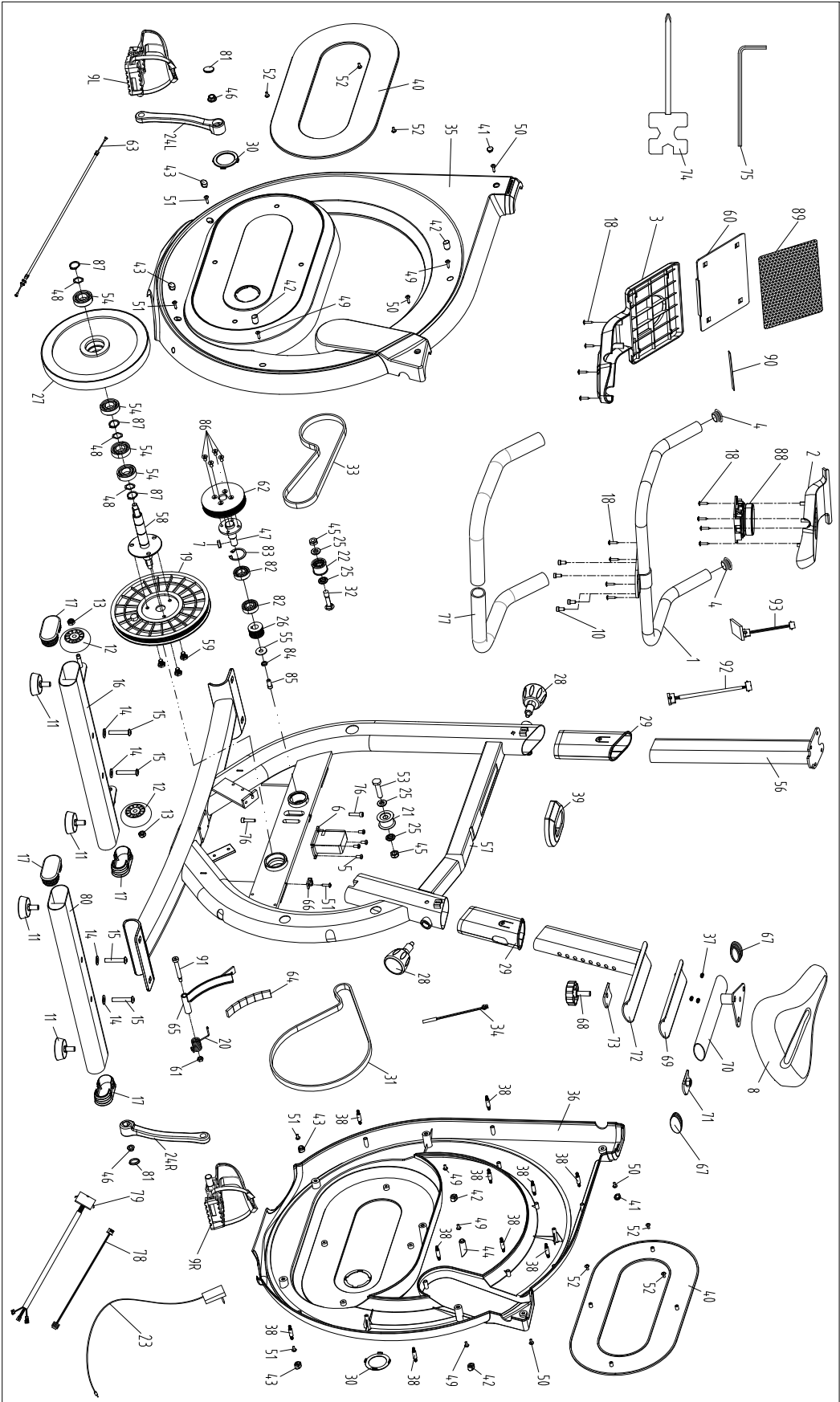
Please read all instructions carefully before using this product.

Retain this manual for future reference.

The specifications of this product may vary slightly from

the illustrations and are subject to change without notice.

## **COMPLETE EXPLOSION DRAWING**



# Part List

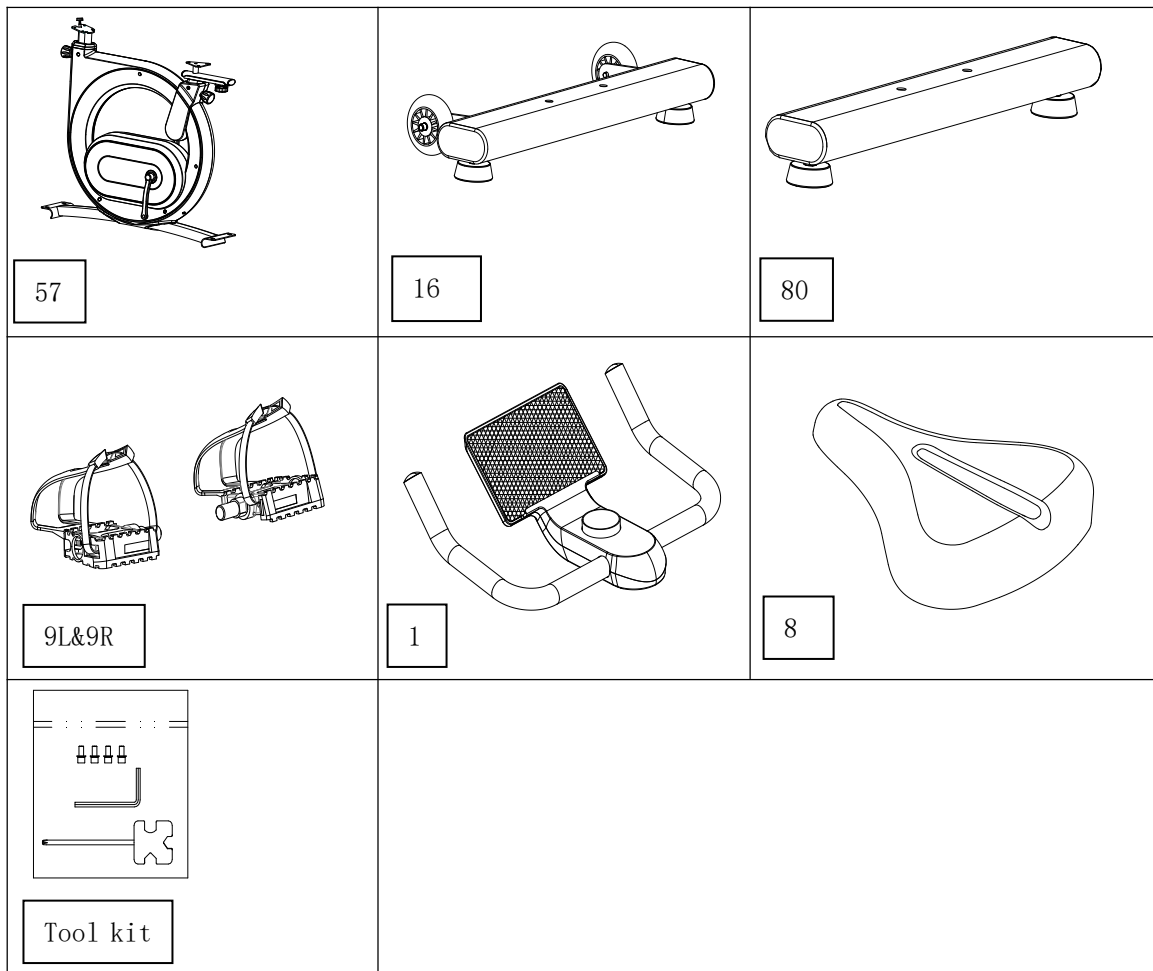
No.	Name	Qty	Description
1	Welding Crew	1	
2	Bracket upper cover	1	ABS
3	Bracket lower cover	1	ABS
4	Mushroom round head tube plug	2	PP
5	Cross recess pan head screw	4	M5×10L
6	Motor	1	
7	Flat key	1	5*5*22
8	Saddle	1	
9L	Left pedal	1	
9R	Right pedal	1	
10	Hexagonal cylindrical screw	4	M6×1.0×12L S5
11	Adjustment foot pad	4	
12	Caster wheel	2	
13	Plastic locknut	2	M8×1.25
14	Flat washer	4	Φ8.5×Φ20×1.5t
15	Hexagonal pan head screw	4	M8×50L
16	Welding front foot tube	1	
17	Oval plug	4	
18	Cross recess pan head tapping screw	12	ST3.5×14H
19	Belt pulley	1	Φ220×20×PJ6
20	Torsion spring	1	Φ1.2×63.3×30.5
21	Guide pulley	1	

22	Press pulley	1	
23	Adaptor	1	
24L	Left crank	1	
24R	Right crank	1	
25	Step sleeve	4	
26	Drive small multi- groove	1	
27	6KG magnetic flywheel	1	Φ 240×40
28	Pull knob	2	M16×1.5 牙纹长度 27L
29	Front intertube bushing	2	
30	Crank hole trim cover	2	
31	Grooved belt	1	PJ6-340
32	Horse bolt	1	M10×1.5×45H
33	Grooved belt	1	PJ6-270
34	Induction line	1	2P sensor head 母头+ sensor bar 感应棒
35	Left chain guard	1	
36	Right chain guard	1	
37	Plastic locknut	3	
38	Plastic connecting rod	6	
39	Retractable armrest trim cover	1	ABS
40	Ornament	2	
41	Screw hole cover-1	2	
42	Screw hole cover-2	4	
43	Screw hole cover-3	4	
44	Screw hole cover-4	1	
45	Plastic locknut	2	M10×1.5

46	Flange nut	2	M10×P1.25
47	Traditional Small multi-grooved shaft	1	φ 21× φ 50×60.5L
48	Wave washer	3	φ 21× φ 27×0.3t
49	Cross recess pan head tapping screw	5	ST4.2×19H
50	Cross recess pan head tapping screw	4	ST4.2×10L
51	Cross recess pan head tapping screw	5	ST4.2×16L
52	Cross recess pan head tapping screw	8	BT3.5×9.5H
53	Square head screw	1	M10X40H
54	Bearing	4	6004-2RS
55	Flat washer	1	φ 8.2× φ 24×1.5t
56	Extension tube	1	
57	Welded frame	1	
58	Crank shaft	1	
59	Hexagon bolt	3	M8×10L
60	Tablet stand	1	ABS
61	nut	1	M6
62	Driving groove	1	φ 96×18.5L
63	Motor pull wire	1	
64	Magnet	6	
65	Welded magnet frame 磁铁架焊接组	1	
66	Induction rod holder	1	
67	Positive oval plug	2	
68	Plum knob	1	M10×P1.5 thread 30L
69	Slide seat cushion block	1	
70	Seat cushion sliding group	1	

71	Seat cushion adjustment block	1	
72	Seat cushion lift and shrink group	1	
73	Curved pad	1	
74	Cross spanner	1	
75	Hex wrench	1	S5
76	Hexagon socket cap screw	2	M6×25H
77	Foam	2	Φ25×3T×446L
78	Power connection cable	1	
79	Console lower segment wire	1	
80	Welded black foot tube	1	
81	Crank hole end cap	2	
82	Bearing	2	6003-2RS
83	Hole inside retaining ring	1	D35
84	Spring washer	1	Φ8.2×Φ13×2t
85	Hex socket flat round head screw	1	M8×16H
86	Hex socket countersunk head screw	4	M6×10H
87	Shaft retaining ring outer card	3	Φ20
88	Jog dial 飞梭旋钮	1	孔距 50×74
89	Non-slip pad	1	211×138
90	Soft plastic pad	1	12.6×154.6
91	Shoulder screw	1	M6×Φ8×50H
92	Console upper segment wire	1	
93	SPAX module	1	

## Details

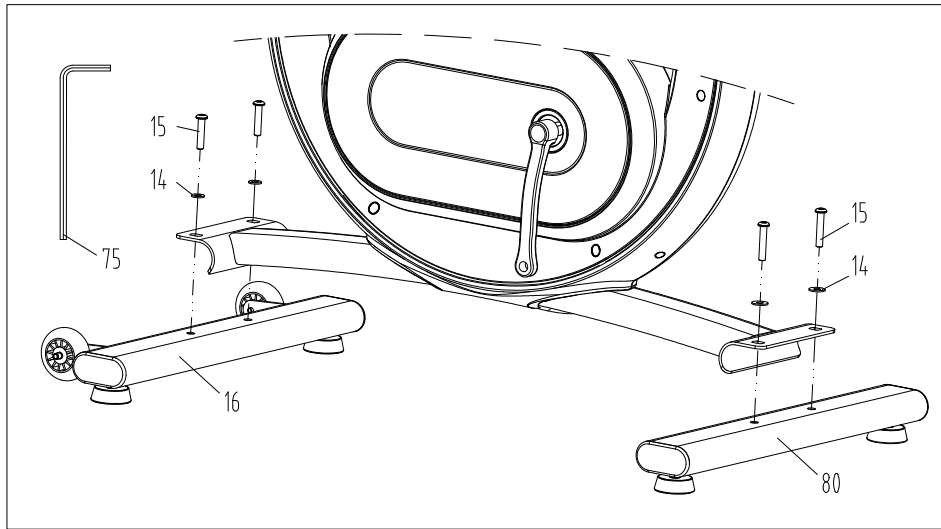


## Assembly part list:

No. #	Name	Qty
57	Main frame	1
16	Front stabilizer	1
80	Rear stabilizer	1
9L、9R	Pedal	1
8	Saddle	1
1	Armrest	1
Tool kit		
74	Cross spanner 13/14/15	1
75	Hex wrench S=5	1
10	Hexagon cylindrical head screw M6×12H	4

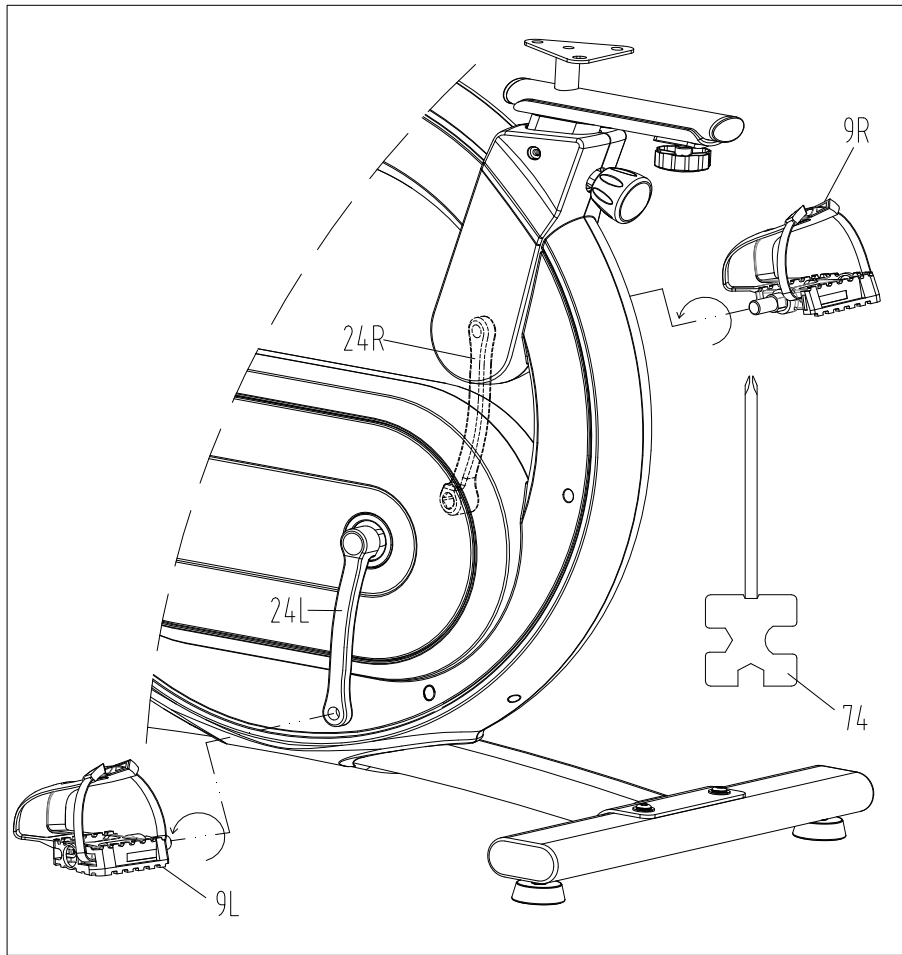


## Assemble step:



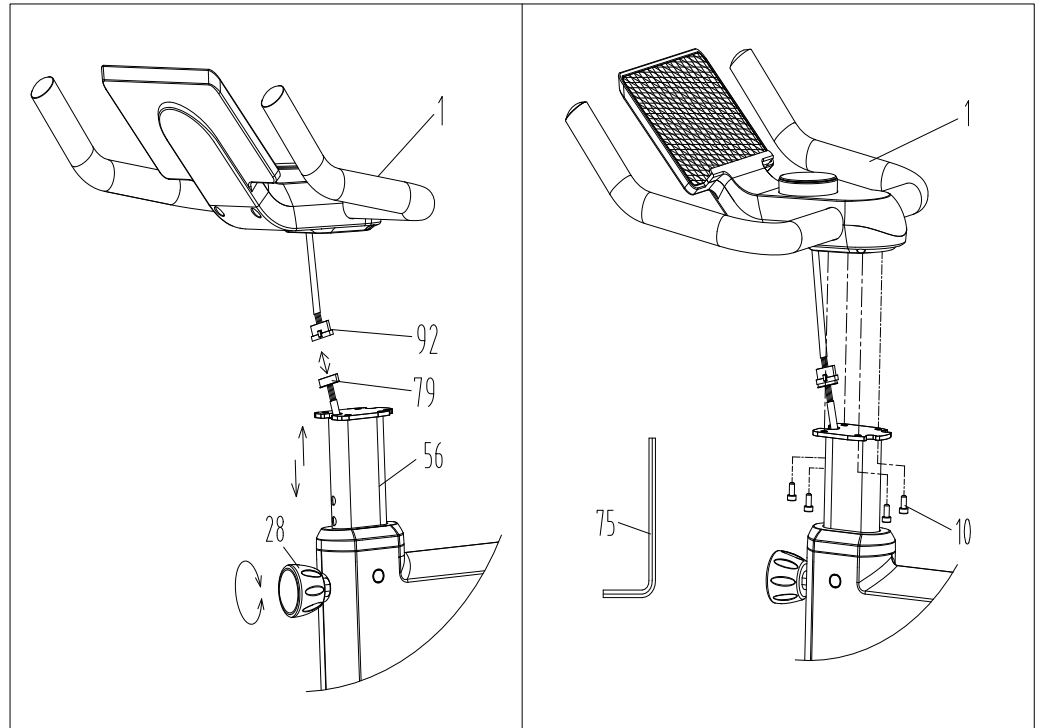
Step1:

Install front tube (16) and rear foot tube (80) on the main frame (57) with the flat washer (14)、hexagon pan head screw(15) using the hex wrench (75).



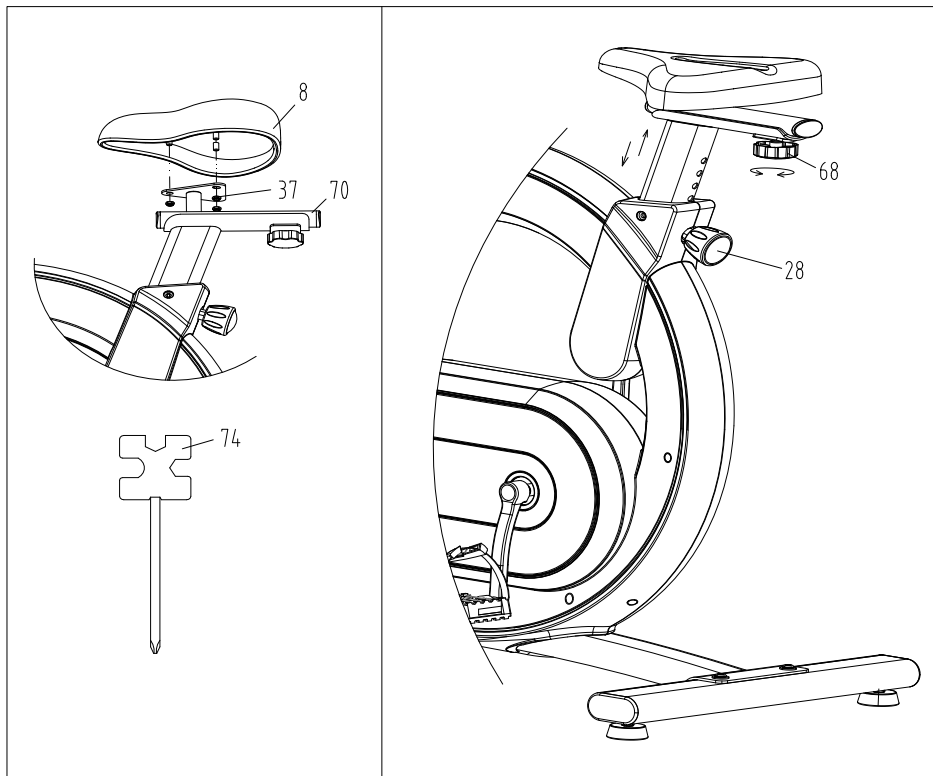
Step2:

Using a cross spanner (74) to connect left pedal (9L) to left crank(24L) counterclockwise and right pedal(9L) to right crank (24R) counterclockwise.



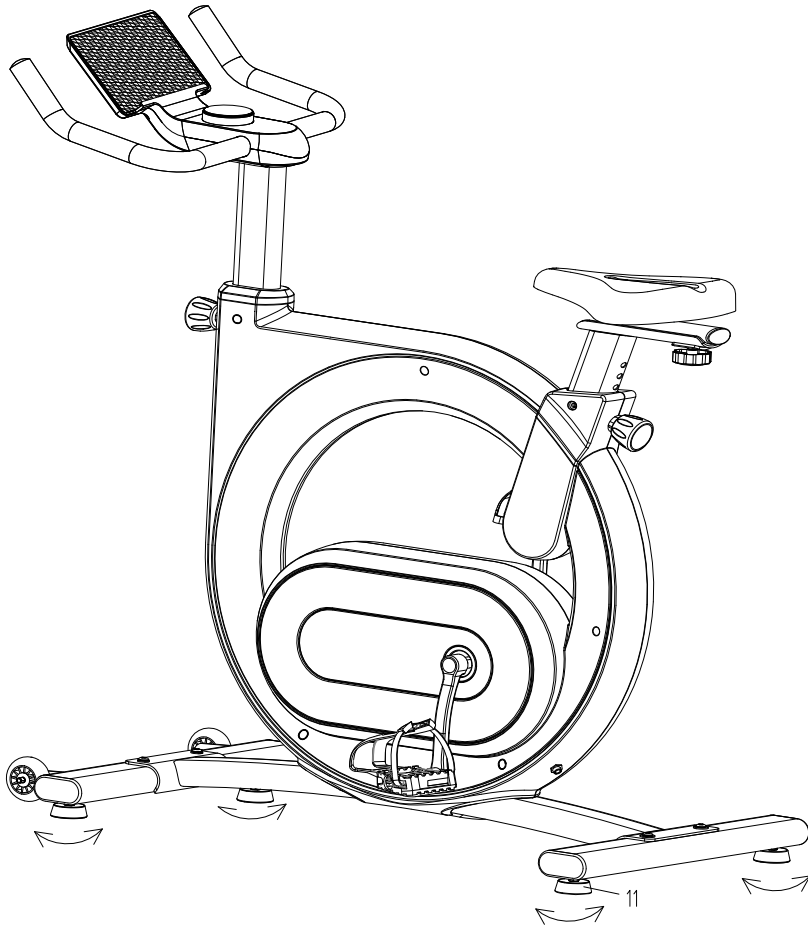
Step3:

- ①: Loose and pull out pull knob (28), then pull the armrest lift and shrink tube (56) to appropriate height, can adjust the height of armrest through the pull knob, and align the hole to the desired height, then tighten properly, but not more than “MAX”
- ②: Connect the lower segment wire (79) and upper segment wire (92) of Digital
- ③: Screw 4pcs M6\*12 L (10) into the four holes of extension tube (56), then use hex wrench to lock the entire front handrail into the four threaded hole of handrail extension tube.



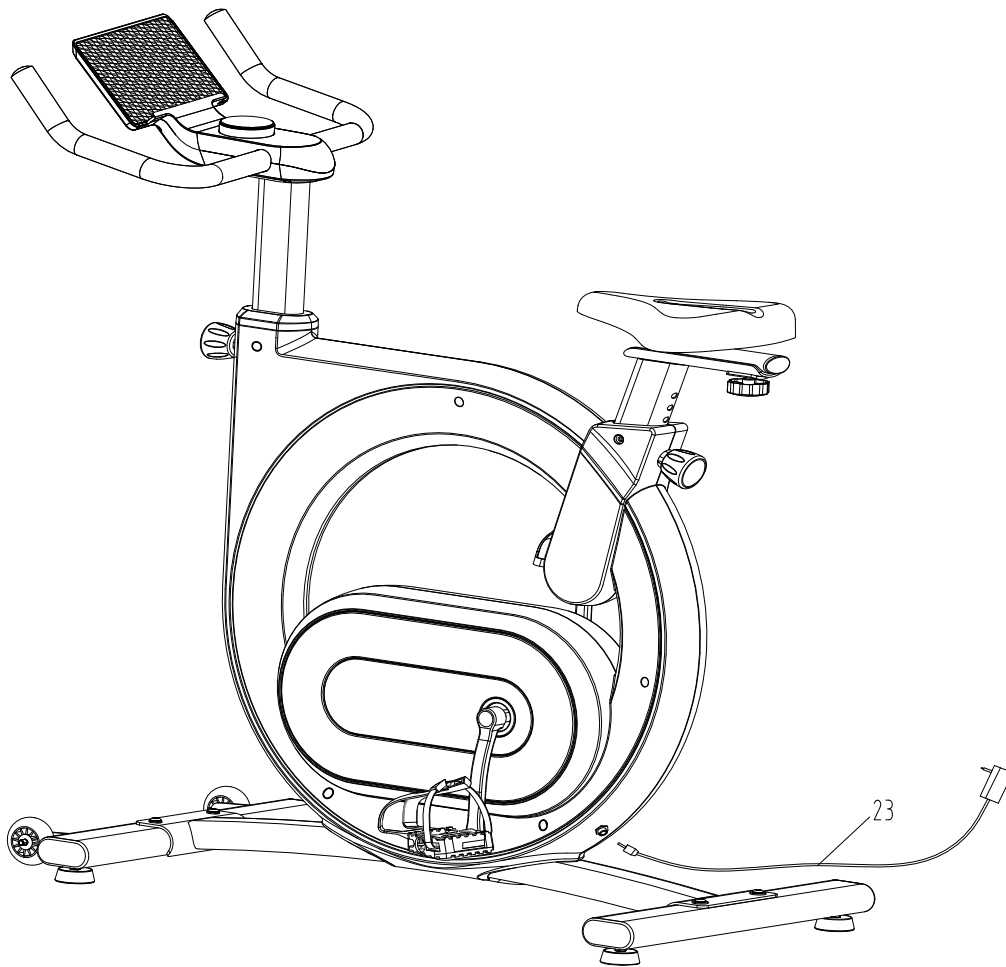
Step4:

- ①: Fasten the saddle with 3 pcs nuts (37) on seat cushion sliding group
- ②: You can adjust the height of saddle by loosening knob (28) and aligning the hole with desired height, then fasten it properly, but not beyond “MAX” .
- ③The saddle can also slide back and front , is finally secured by a knob (68).



Step5:

You can adjust the adjustment foot pad (11) of front and rear foot tube to keep it stable, if you find the floor is unstable.



Step6:

Please connect properly power supply to the adaptor (23) , when start to use this product.

Notice: Please check and ensure each connection is securely locked before use.

